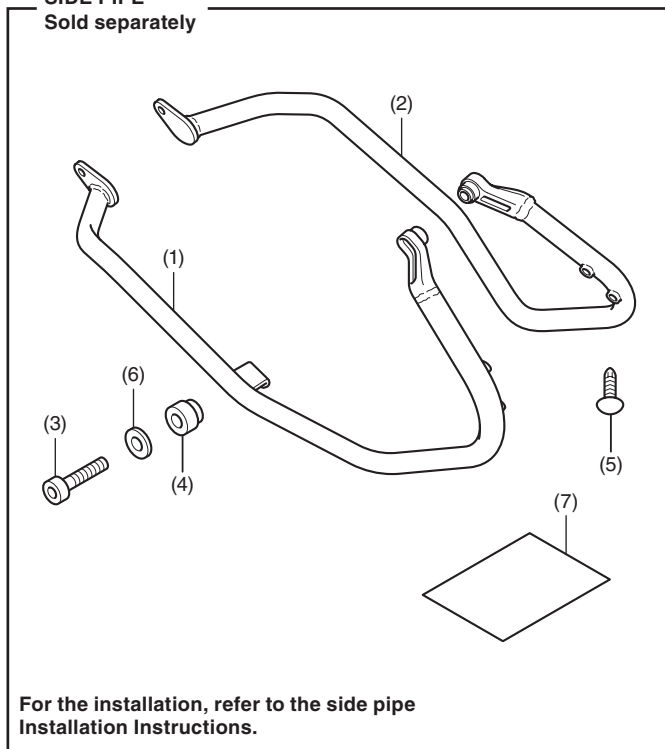


SIDE PIPE

Sold separately

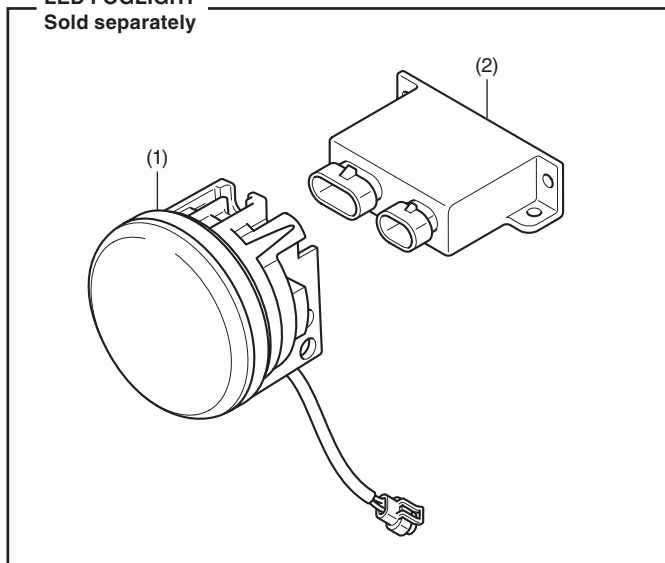


For the installation, refer to the side pipe Installation Instructions.

No.	Description	Qty
(1)	Right side pipe	1
(2)	Left side pipe	1
(3)	8 mm socket bolt	6
(4)	Stepped collar	4
(5)	Brush clip (Not used.)	4
(6)	8 mm washer	6
(7)	URL paper	1

LED FOGLIGHT

Sold separately



No.	Description	Qty
(1)	LED foglight	2
(2)	LED foglight driver	1

TOOLS AND SUPPLIES REQUIRED

- Socket (8 and 10 mm)
- Ratchet
- Box-end wrench (8 and 10 mm)
- Hex wrench (5 and 6 mm)
- Phillips® screwdriver
- Nippers
- Electric drill
- Drill bit (5.5 and 7 mm)
- Scissors
- Scale
- Marker
- Electrical tape
- Isopropyl alcohol
- Shop towel
- Torque wrench

TORQUE CHART

Tighten all screws, bolts, and nuts to their specified torque values. Refer to the Service Manual for the torque values of the removed parts.

Item	N·m	kgf·m	lbf·ft
4 mm screw	1.2	0.1	0.9
5 mm socket bolt	5.2	0.5	3.8
6 mm screw	9	0.9	6.6
6 mm SH flange bolt	10	1.0	7
6 mm socket bolt	10	1.0	7
6 mm flange nut	12	1.2	9

INSTALLATION

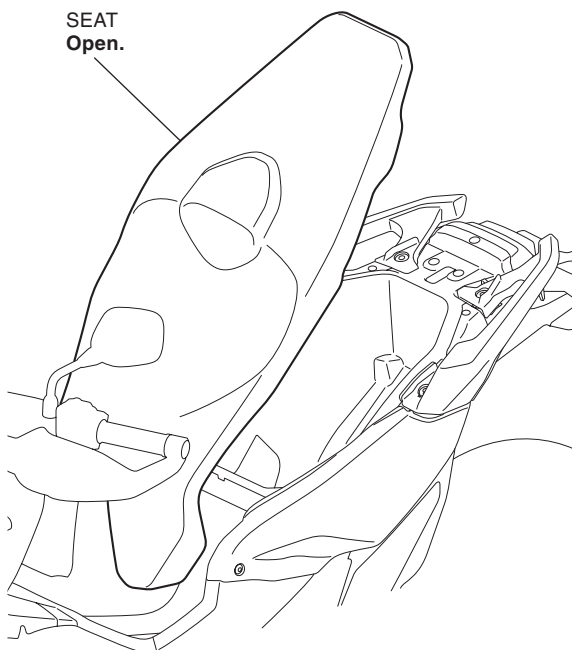
▲ CAUTION

- To prevent burns, allow the engine, exhaust system, radiator, etc. to cool before installing the accessory.

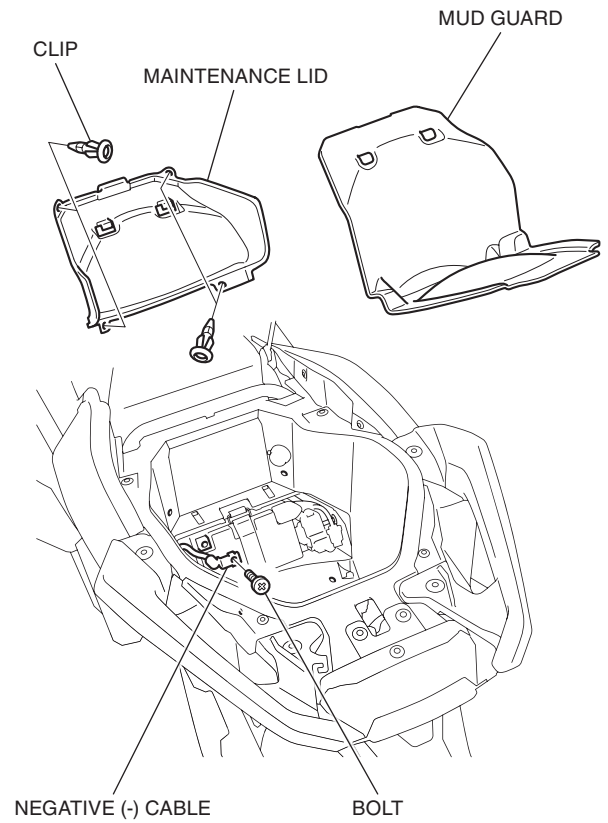
NOTE:

- Heat the bonding surfaces with a hair dryer if the ambient air temperature is below 70°F (21°C).
 - The adhesive reaches full strength in 72 hours. Wait at least 24 hours before riding your motorcycle.
 - Take care not to damage the painted surfaces of the motorcycle.
 - Reinstall the removed parts on the motorcycle and make sure that wires and harnesses are not pinched.
 - Disconnect the negative (-) cable from the battery before installing this accessory.
 - The memory of the trip meter will be erased and the clock will stop when the battery is disconnected. After reconnecting the battery, refer to the motorcycle Owner's Manual and reset the clock.
 - Trim the excess ends off the wire ties after attaching them to the wire harnesses. Do not allow the cut part of the wire tie to interfere with any harness or brake hose.
 - When replacing any other accessory that is required to install the LED foglight, follow these instructions only.
 - Save all removed parts unless otherwise indicated.
- **Illustration shows ADV750 type, another type is similar.**

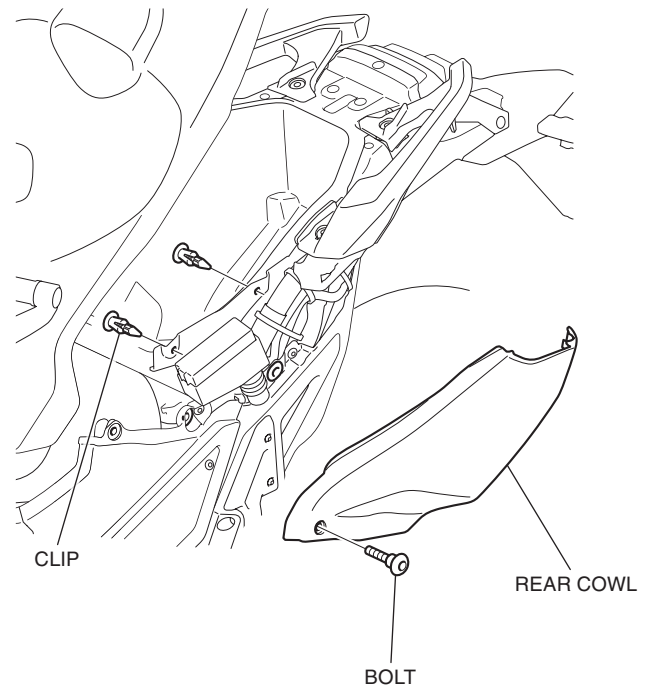
1. Open the seat.



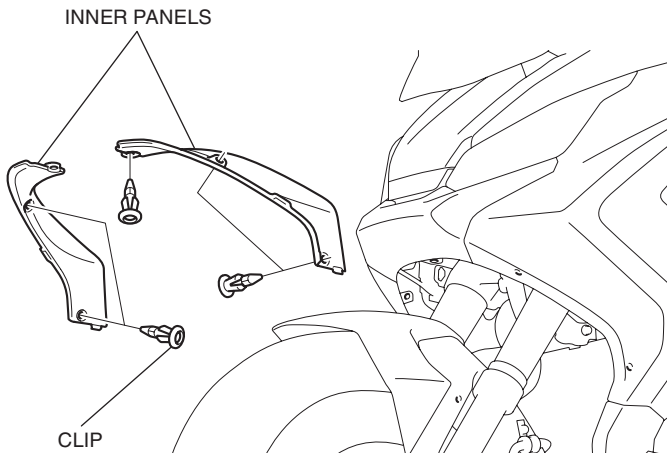
2. Refer to the Service Manual for the motorcycle, remove the motorcycle parts, and disconnect the negative (-) cable from the battery as shown.



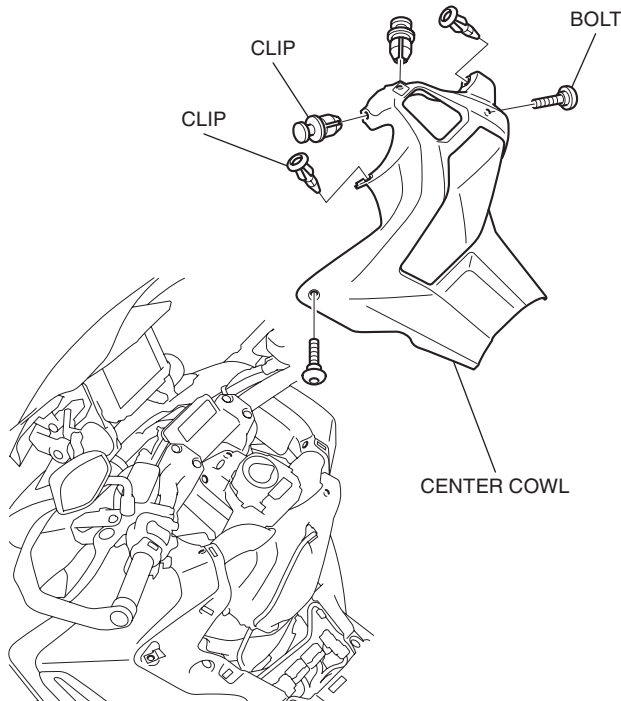
3. Refer to the Service Manual for the motorcycle, remove the motorcycle parts.
 - Repeat on the right side.



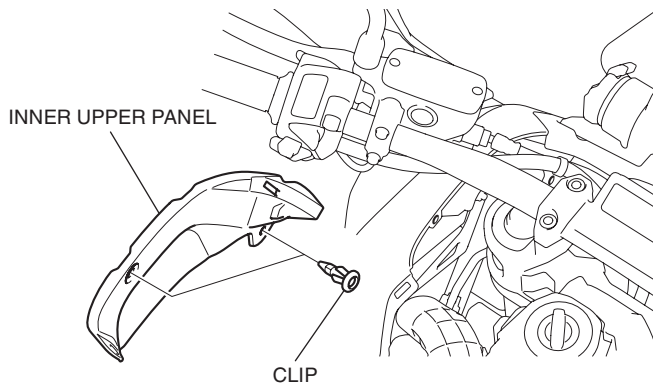
4. Refer to the Service Manual for the motorcycle, remove the motorcycle parts.



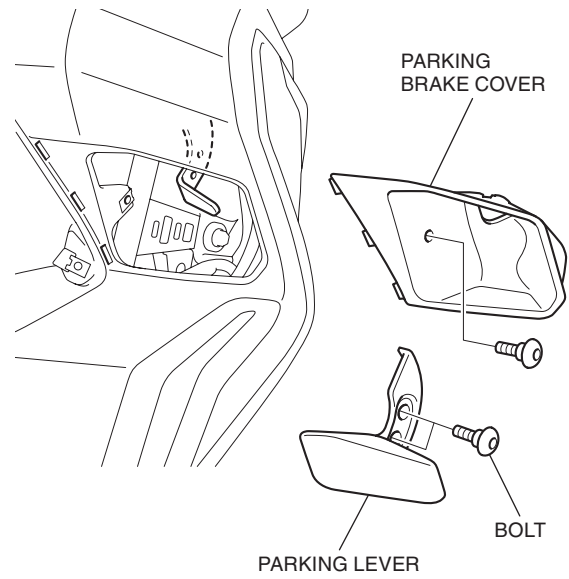
5. Refer to the Service Manual for the motorcycle, remove the motorcycle parts.



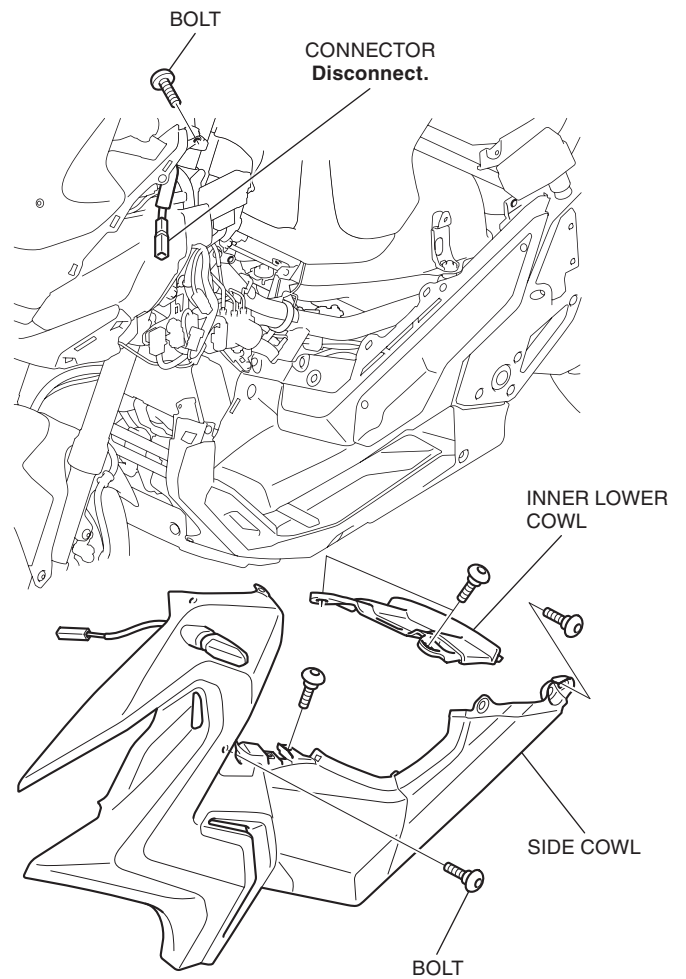
6. Refer to the Service Manual for the motorcycle, remove the motorcycle parts.
 - Repeat on the right side.



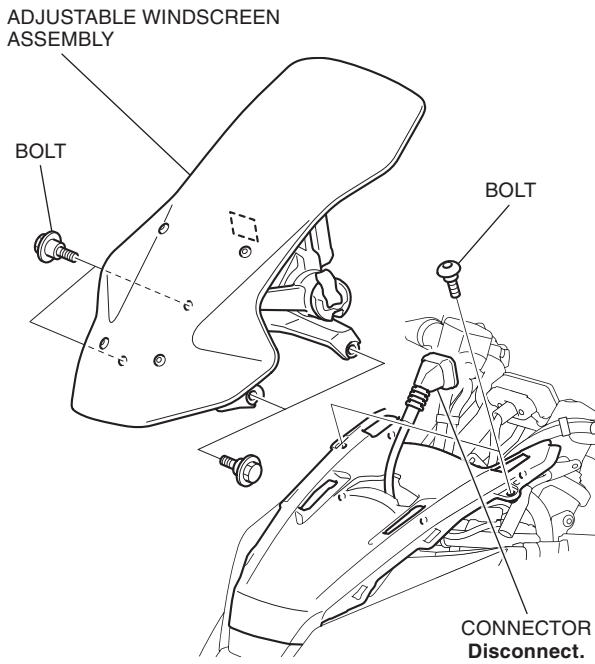
7. Refer to the Service Manual for the motorcycle, remove the motorcycle parts.



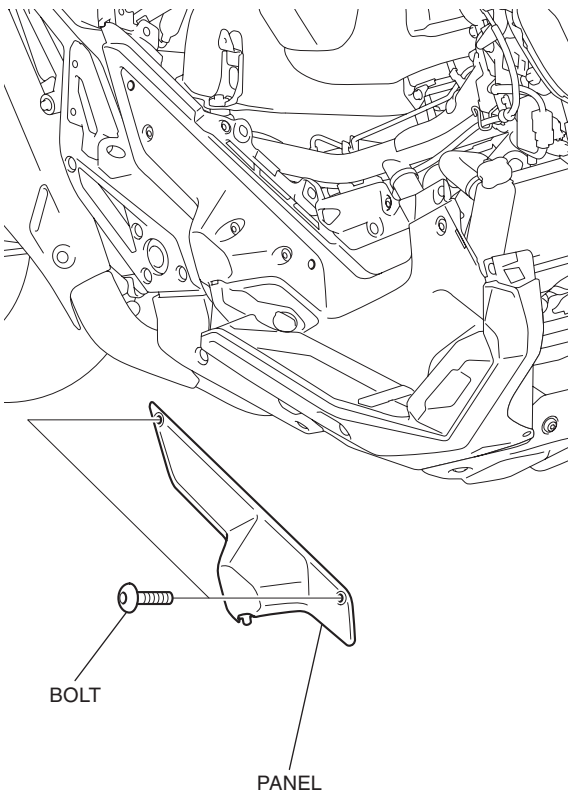
8. Refer to the Service Manual for the motorcycle, remove the motorcycle parts.
 - Repeat on the right side.



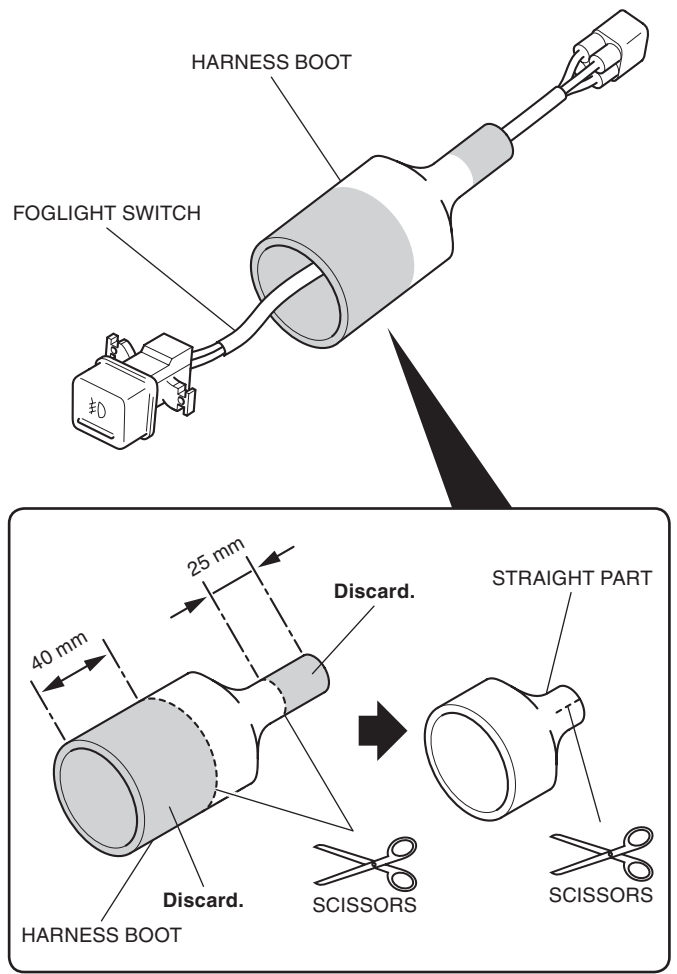
9. Refer to the Service Manual for the motorcycle, remove the motorcycle parts.



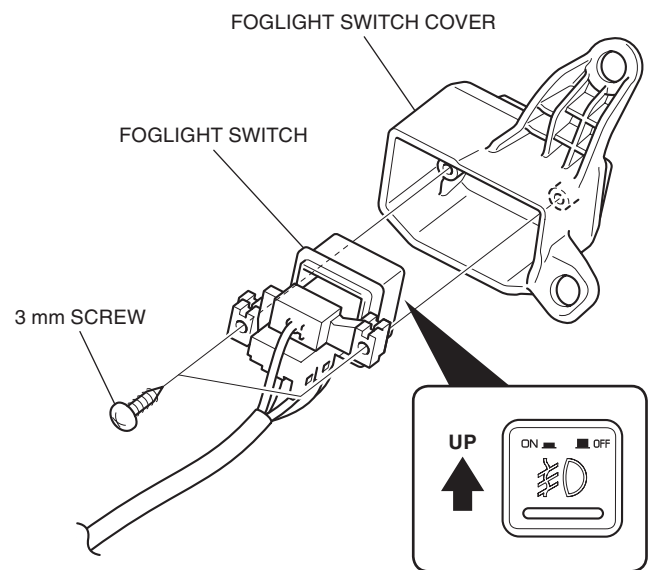
10. Refer to the Service Manual for the motorcycle, remove the motorcycle parts.



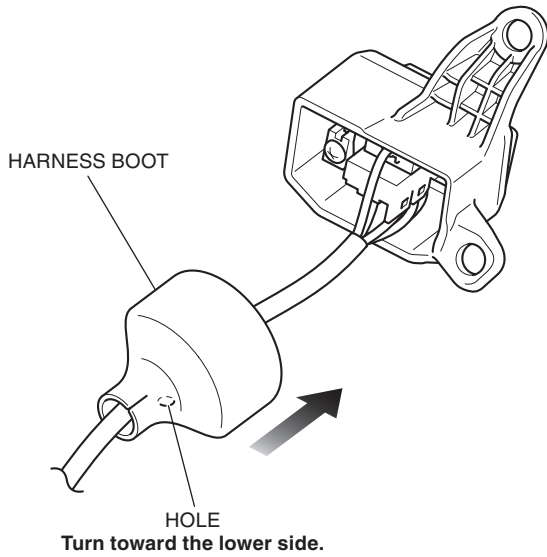
11. Cut the shaded area of the harness boot as shown.
- Be careful not to damage the harness.



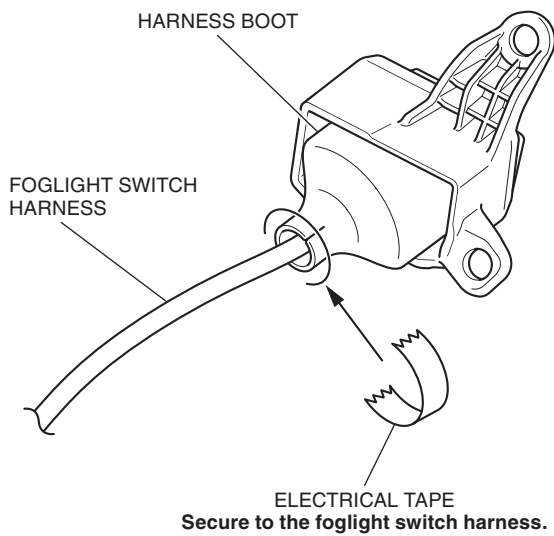
12. Install the foglight switch cover as shown.



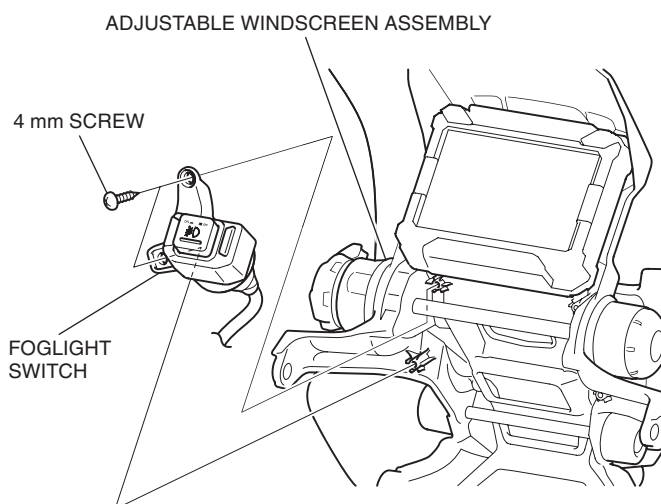
13. Fit the harness boot as shown.



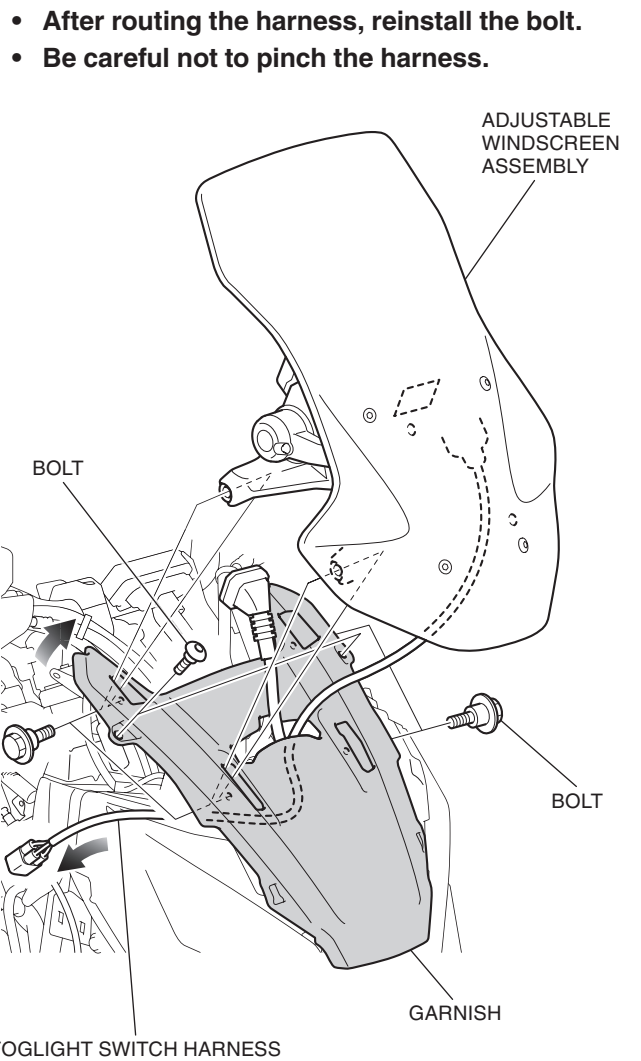
14. Secure the harness boot with electrical tape as shown.



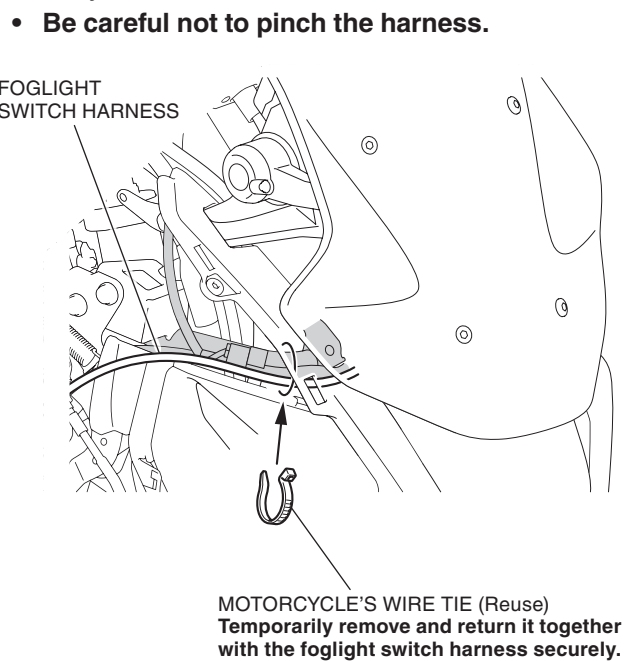
15. Install the foglight switch as shown.



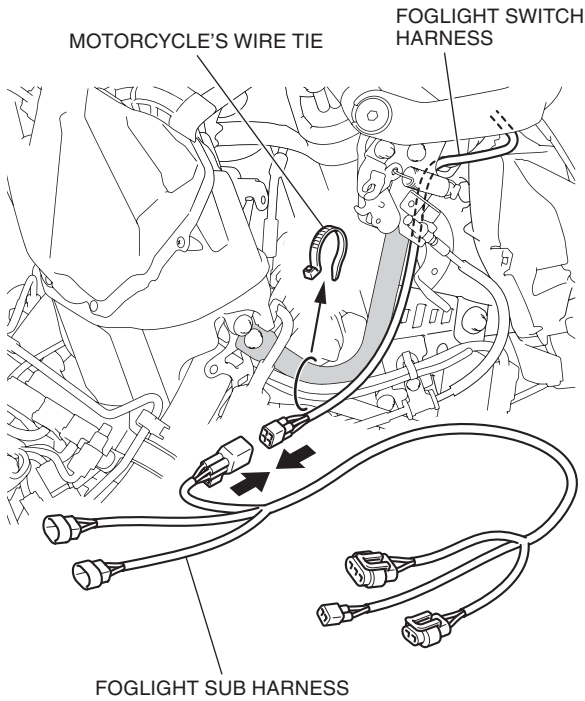
16. Route the foglight switch harness while opening the upper part of the garnish and install the adjustable windscreen assembly as shown.



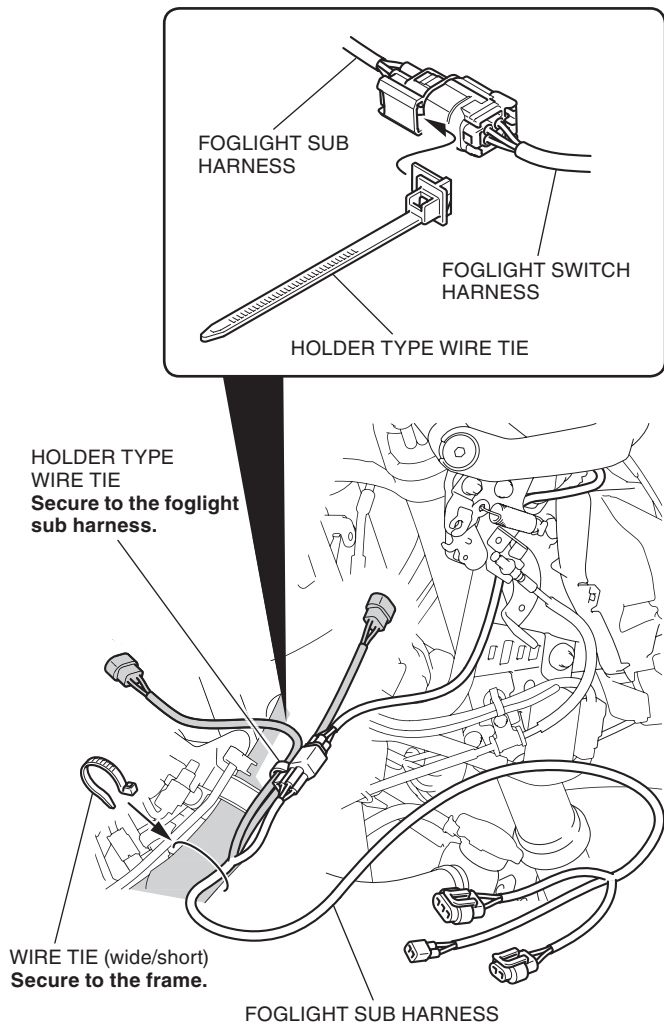
17. Secure the foglight switch harness with the motorcycle's wire tie as shown.



18. Connect the foglight sub harness as shown.

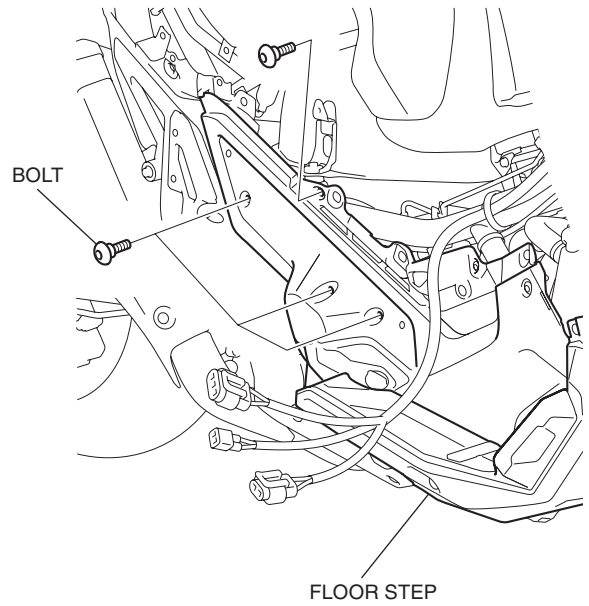


19. Route and secure the foglight sub harness with the wire ties as shown.

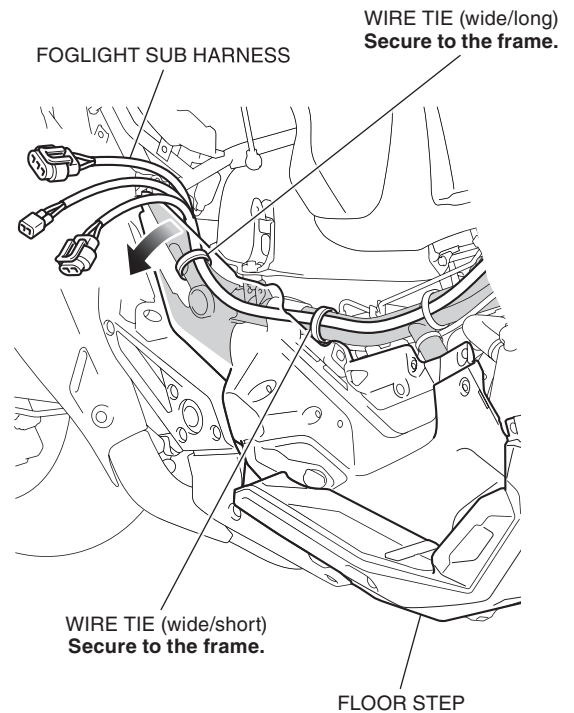


20. Remove the fasteners as shown.

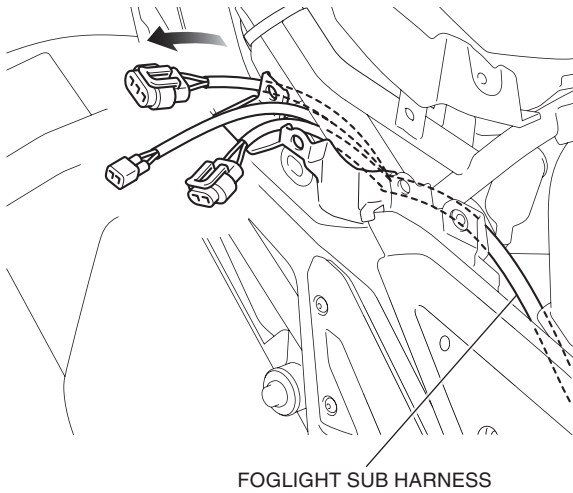
- It is not necessary to remove the floor step.



21. Route the foglight sub harness while opening the upper part of the right floor step as shown.

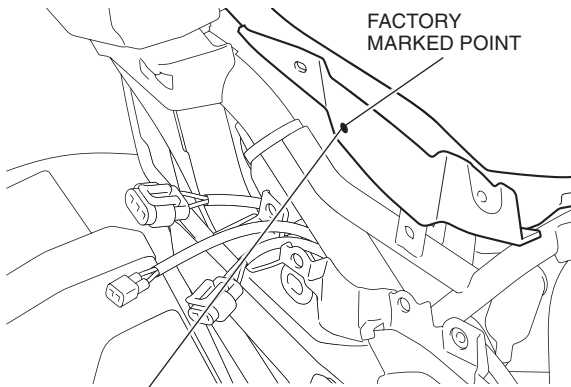


22. Route the foglight sub harness as shown.



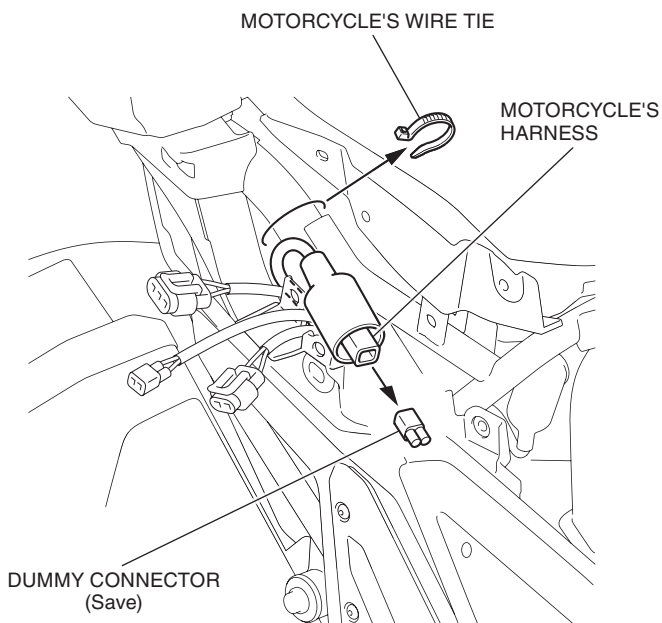
23. Drill at the factory marked point shown using an electric drill.

- Remove any burrs from the edge of the hole.

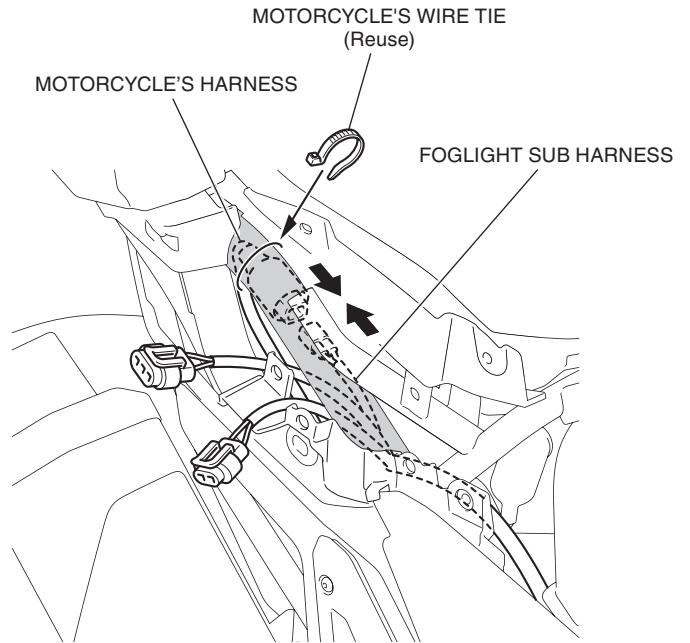



ELECTRIC DRILL
(5.5 mm BIT)

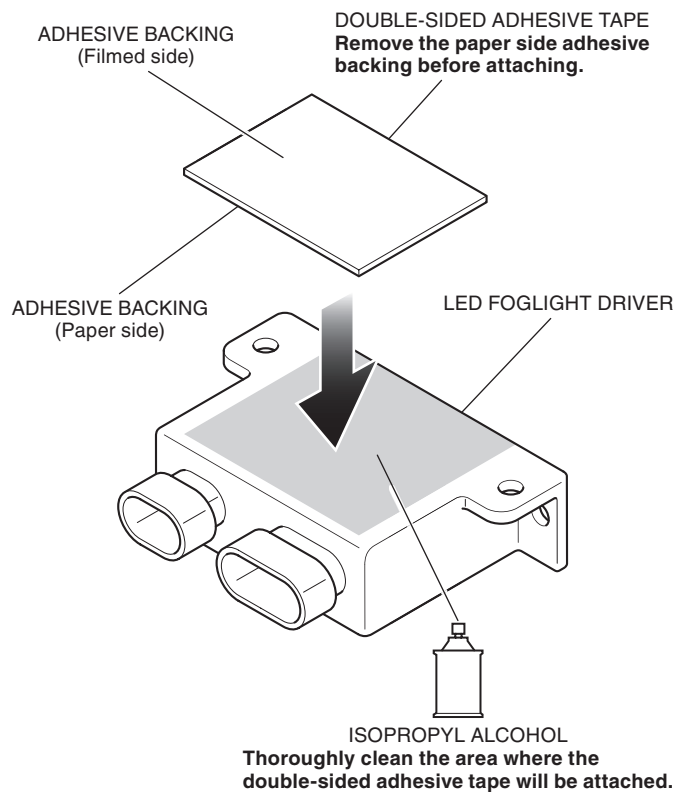
24. Remove the dummy connector as shown.



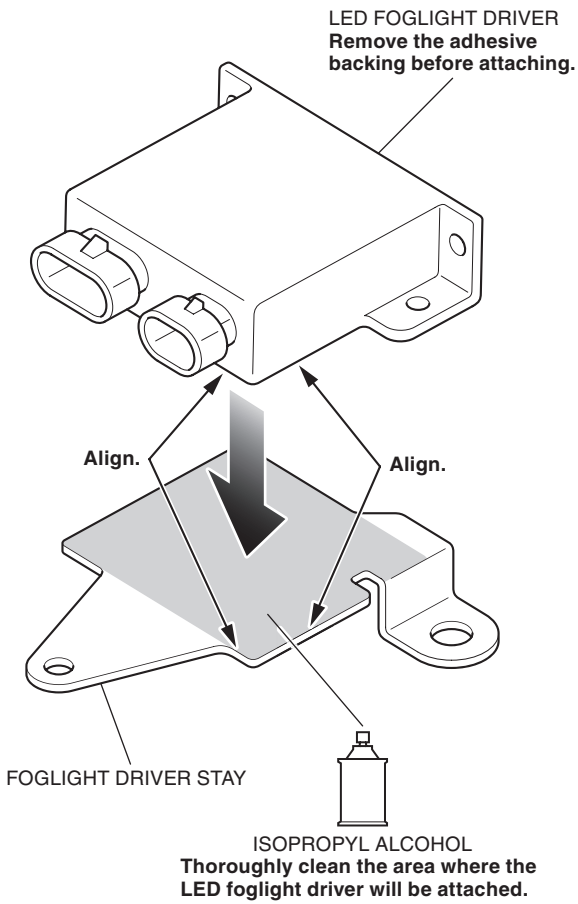
25. Connect the foglight sub harness as shown.



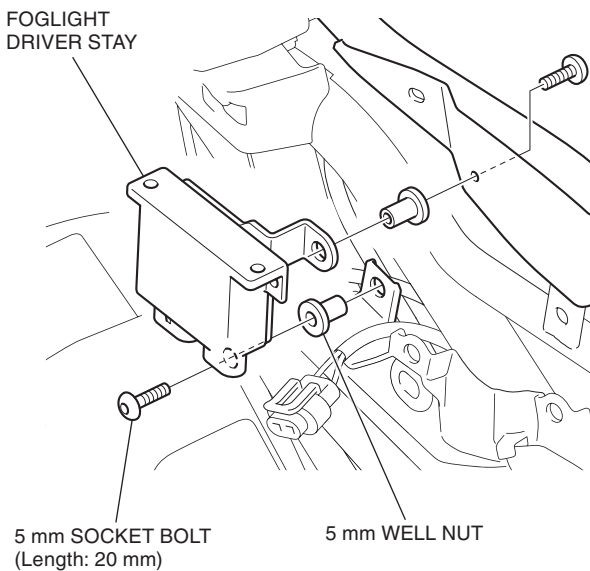
26. Attach the double-sided adhesive tape to the LED foglight driver as shown.



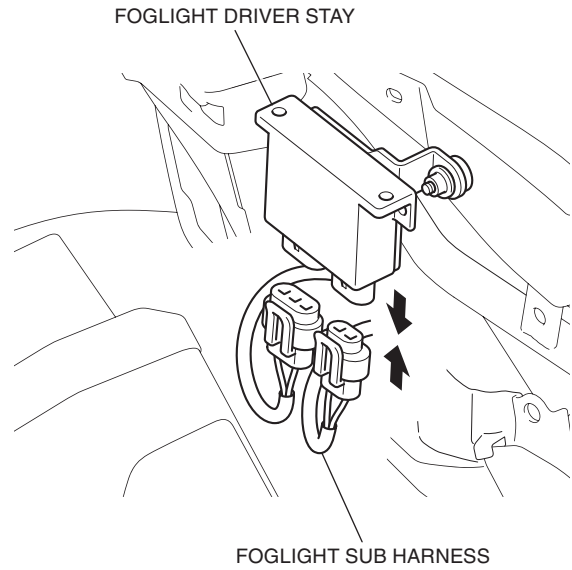
27. Attach the LED foglight driver to the foglight driver stay as shown.



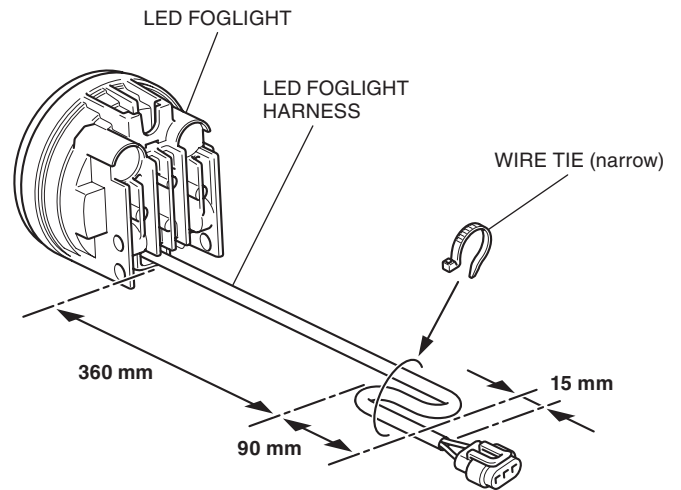
28. Install the foglight driver stay as shown.



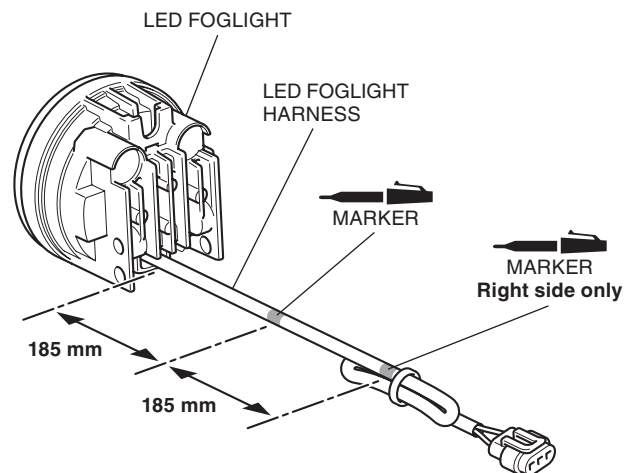
29. Connect the foglight sub harness as shown.



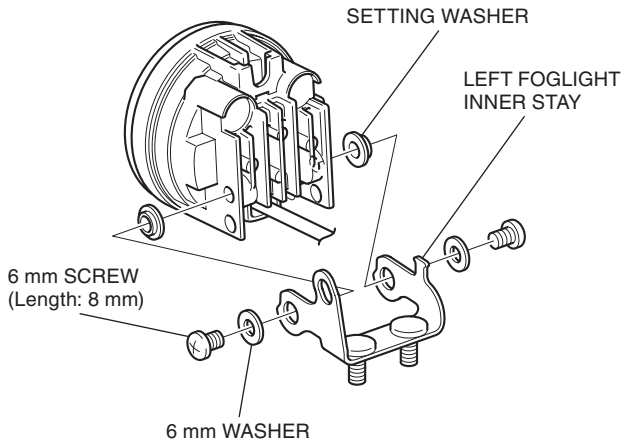
30. Bundle the LED foglight harness in the dimensions shown.



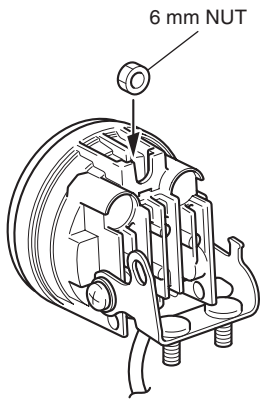
31. Mark the LED foglight harness in the positions shown.



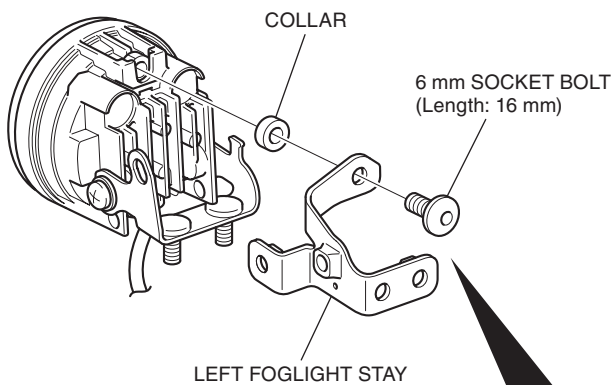
32. Loosely install the left foglight inner stay as shown.



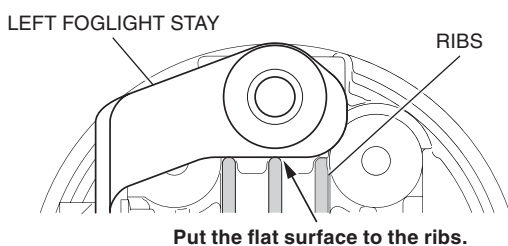
33. Set the 6 mm nut as shown.



34. Install the left foglight stay as shown.

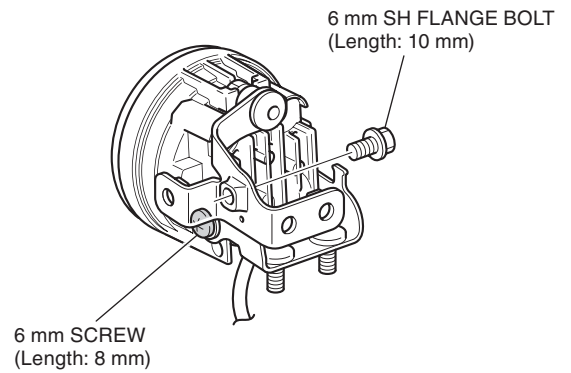


Install the left foglight stay so that contacting its flat surface to the ribs of the foglight as below.
<Backside view>

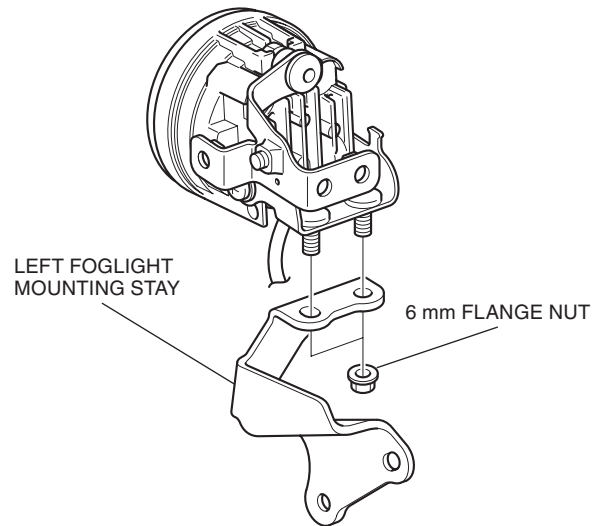


35. Assemble the left foglight stay as shown.

- After installing the 6 mm SH flange bolt, tighten the 6 mm screw securely.

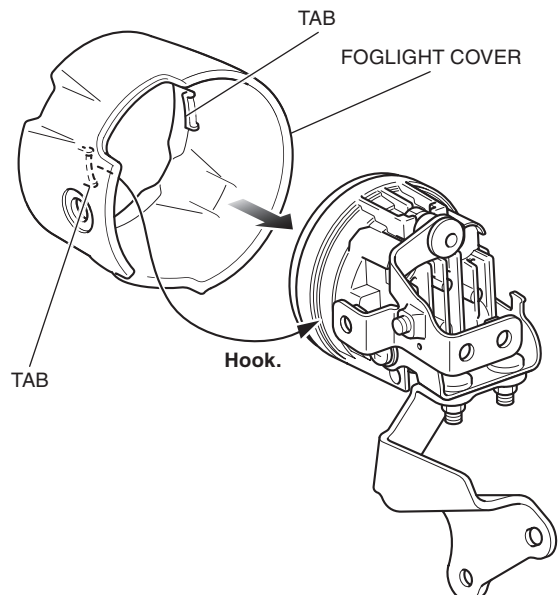


36. Install the left foglight mounting stay as shown.

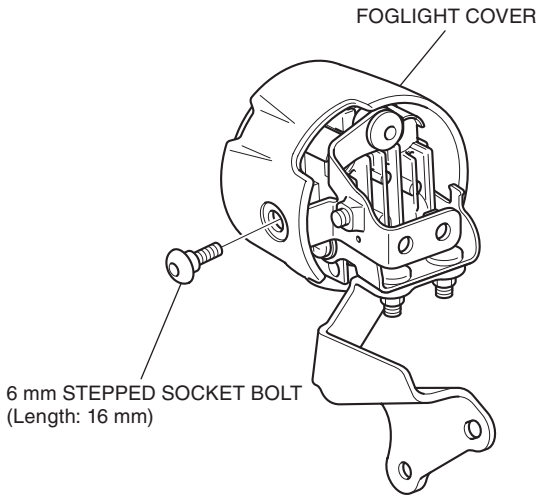


37. Install the foglight cover as shown.

- Hook the foglight cover tabs with the LED foglight.



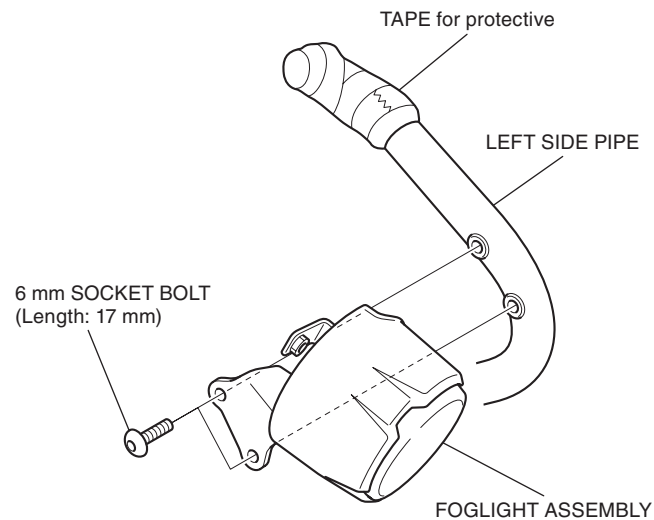
38. Secure the foglight cover as shown.



39. Use steps 30 through 38 to assemble the right LED foglight in the same manner.

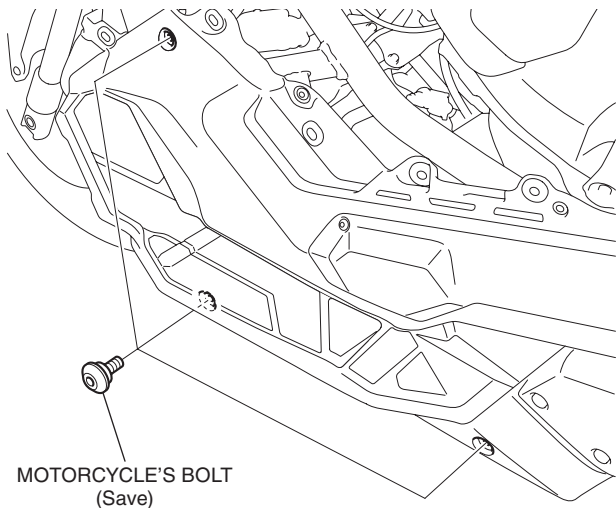
40. Install the foglight assembly to the left side pipe as shown.

• Repeat on the right side.



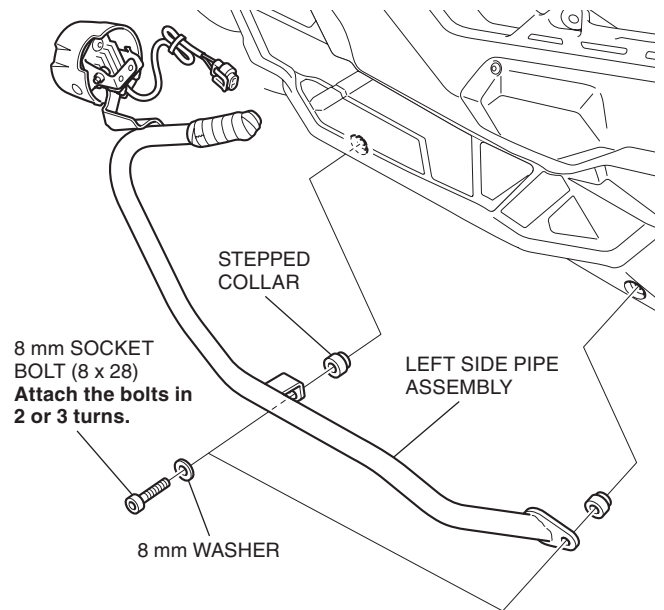
41. Remove the motorcycle's bolts as shown.

• Repeat on the right side.

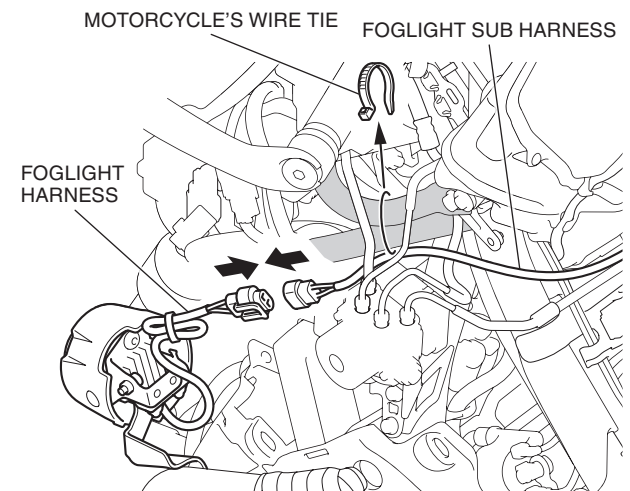


42. Loosely install the left side pipe assembly as shown.

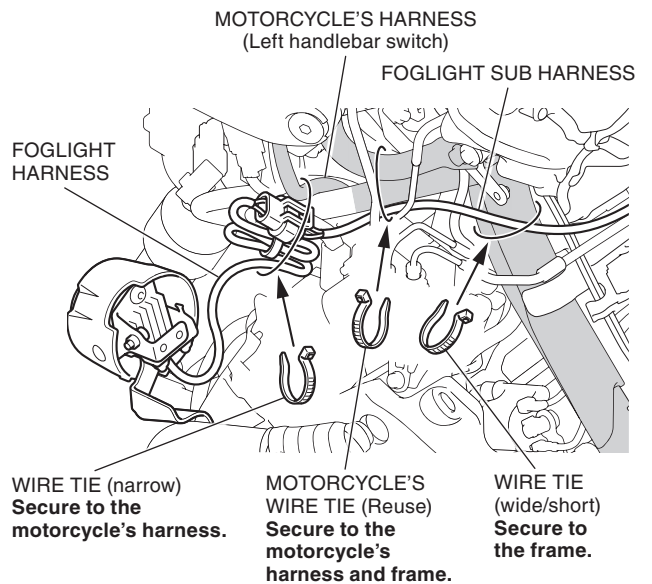
• Repeat on the right side.



43. Connect the foglight harness as shown.



44. Secure the foglight harness with the wire ties as shown.

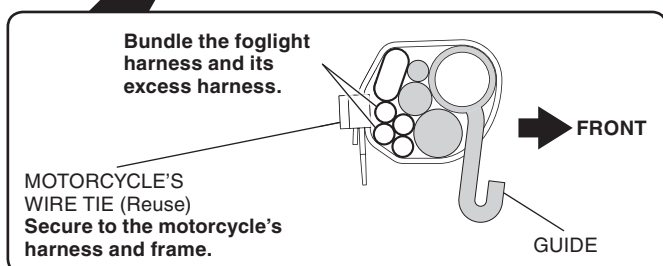
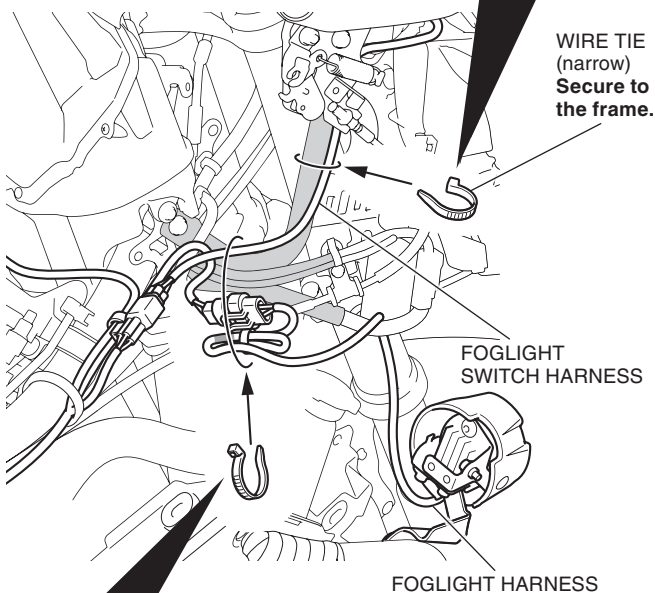
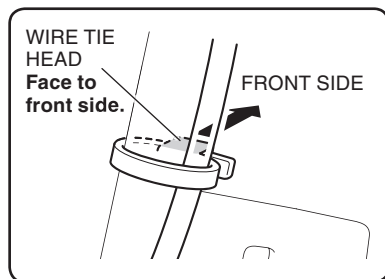


45. Connect the foglight harness as shown.



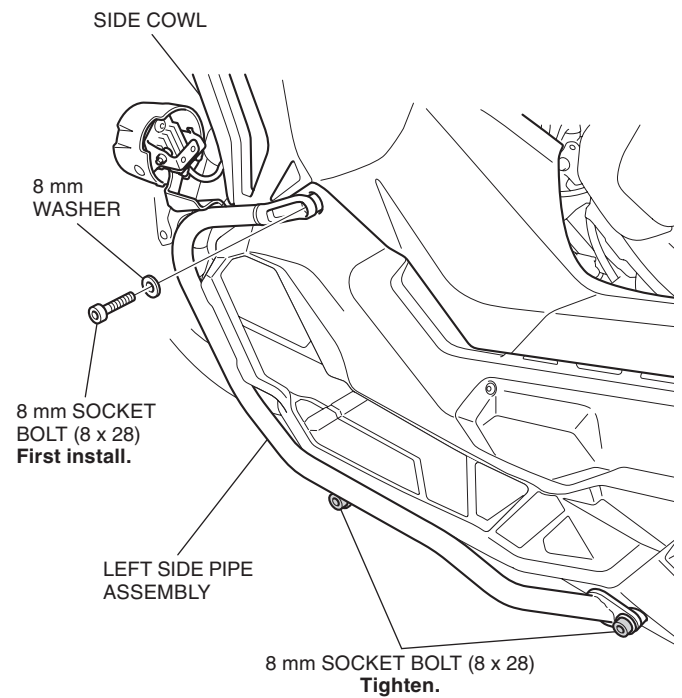
46. Secure the foglight harness and foglight switch harness with the wire tie as shown.

- Do not secure the parking cable.



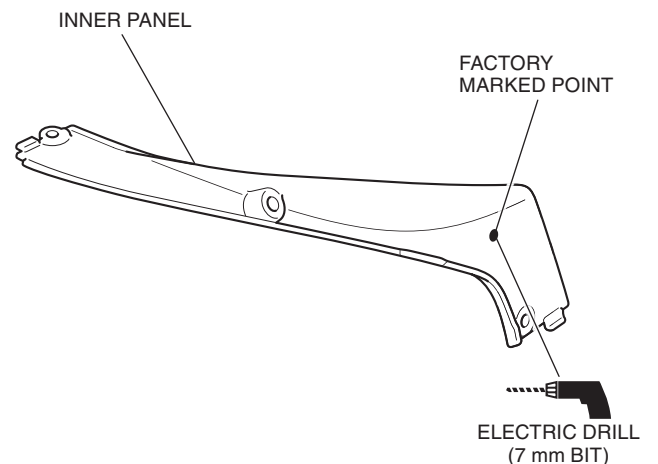
47. Install the side cowl in the reverse order of removal and then install the left side pipe assembly as shown.

- Repeat on the right side.
- Discard the tape of protective from the left side pipe.
- Refer to the Installation Instructions for the side pipe of sold separately,
- First install the front side 8 mm socket bolt.

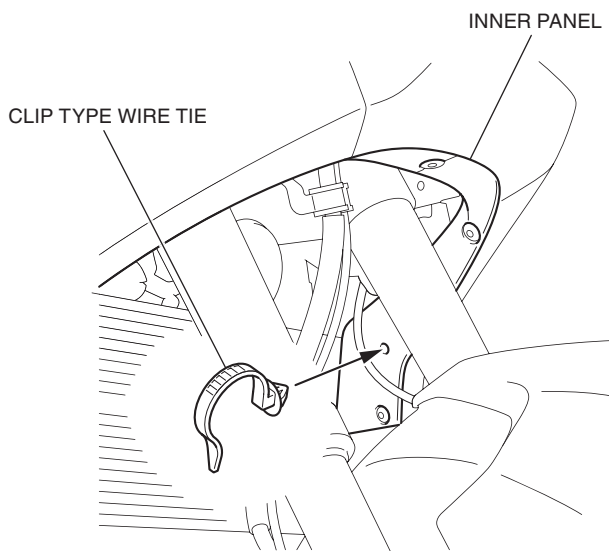


48. Drill at the factory marked point shown using an electric drill, and then install the inner panels in the reverse order of removal.

- Repeat on the right side.
- Remove any burrs from the edge of the hole.

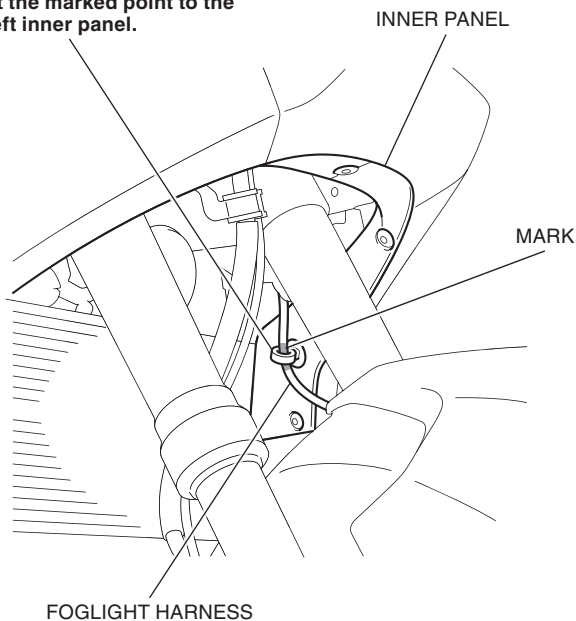


49. Install the wire tie as shown.
- Repeat on the right side.



50. Secure the foglight harness as shown.
- Repeat on the right side.

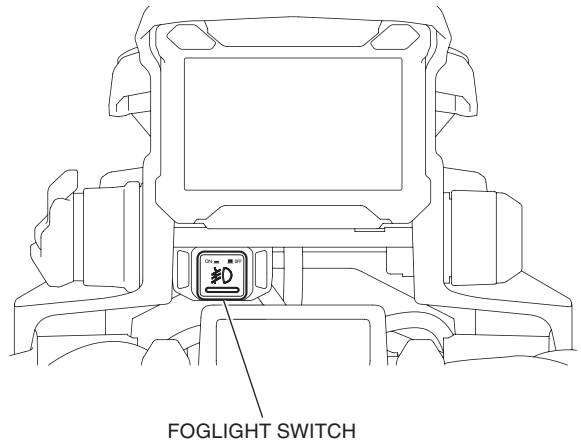
CLIP TYPE WIRE TIE
Secure the foglight harness
at the marked point to the
left inner panel.



51. Move the handlebar right and left, and check that the LED foglight harnesses are not interfere with the front forks.
52. Connect the negative (-) cable to the battery and check each light for function.
53. Perform the AIMING THE FOGLIGHTS
54. Move the handlebar right and left and check that this accessory is not interfere with the motorcycle.

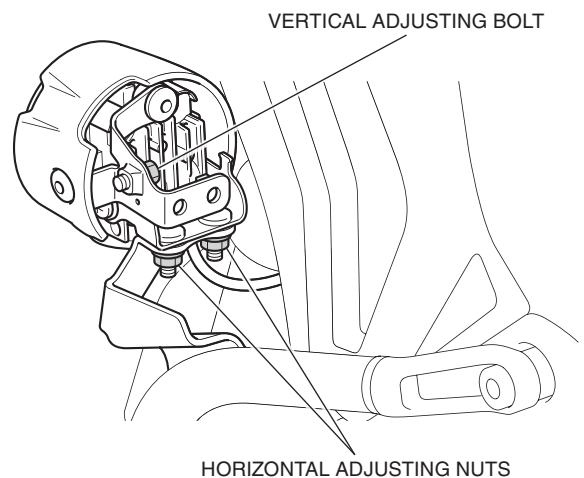
USING THE FOGLIGHT SWITCH

- When the ignition switch is ON and the foglight switch is pressed, the foglight lights up.
- When the foglight switch is pressed again, the foglight is turned off.

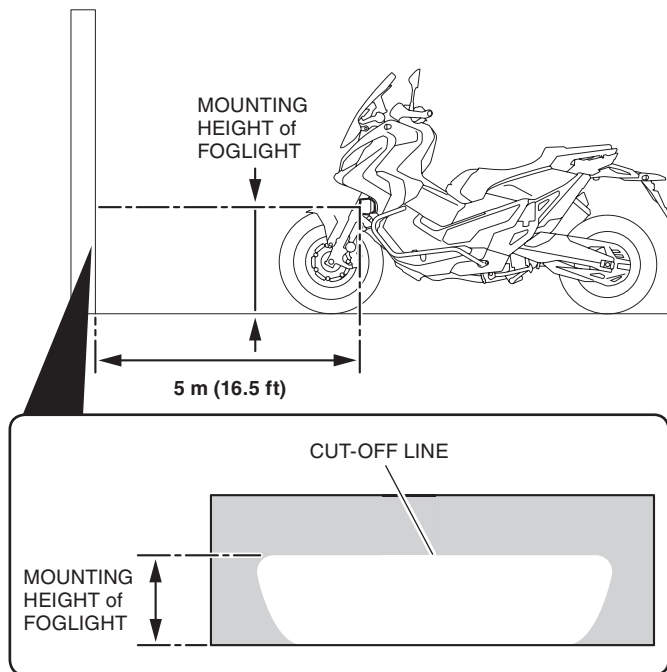


AIMING THE FOGLIGHTS

- Illustration shows left side, the right side is similar.
1. Loosen the bolt/nuts and adjust the aim using the following procedures.



2. Place the motorcycle on a level surface, 5 m (16.5 ft) away from the aiming screen. Turn on the foglights.
3. Measure the mounting height of the foglight from the floor.
4. Aim the foglights so that the cut-off line of the light pattern on the aiming screen is the same distance above the floor as the foglight mounting height.



5. After adjusting the aim, tighten the bolt/nuts.
6. Install the foglight cap as shown.

