



INSTALLATION INSTRUCTIONS

Accessory

TALL WINDSCREEN
P/N 08R72-MGS-A30

Application

NC700X/XD

Publication No.

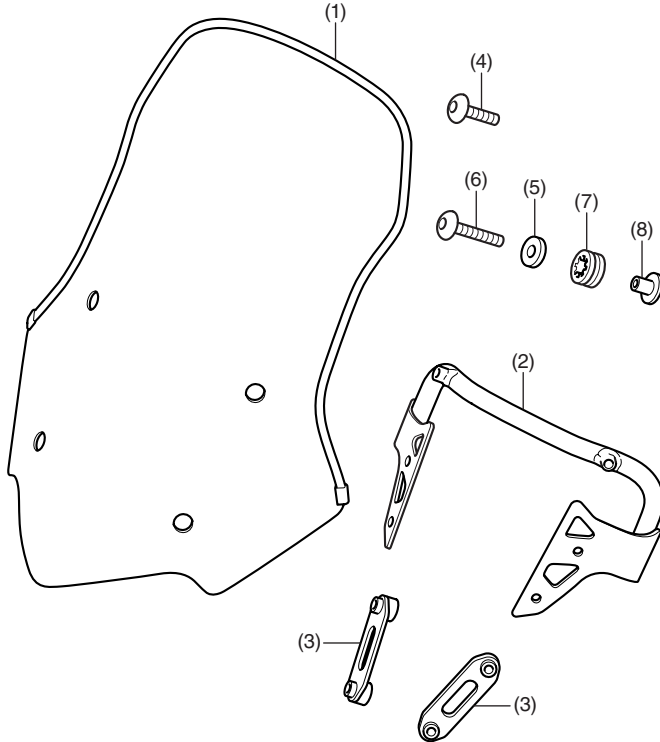
MII 13973

Issue Date

January 2012

Honda Dealer: Please give a copy of these instructions to your customer.

PARTS LIST



No.	Description	Qty
(1)	Tall Windscreen	1
(2)	Screen stay	1
(3)	Plate nut	2
(4)	6 mm socket bolt (short)	2
(5)	Washer	4
(6)	6 mm socket bolt (long)	4
(7)	Grommet	4
(8)	Flange collar	4

TOOLS REQUIRED

Hex wrench (5 mm)

Torque wrench

TORQUE CHART

Tighten all screws, bolts, and nuts to their specified torque values. Refer to the Service Manual for the torque values of the removed parts.

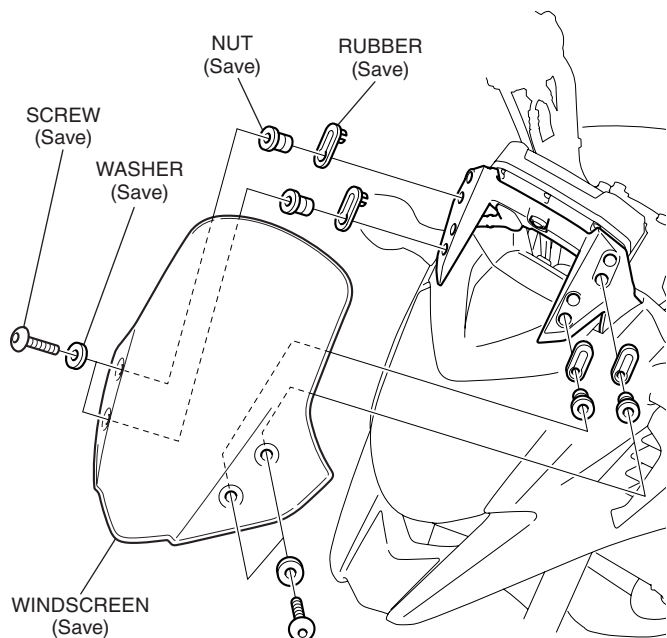
Item	N·m	kgf·m	lbf·ft
6 mm socket bolt	10	1.0	7

USE AND CARE INFORMATION

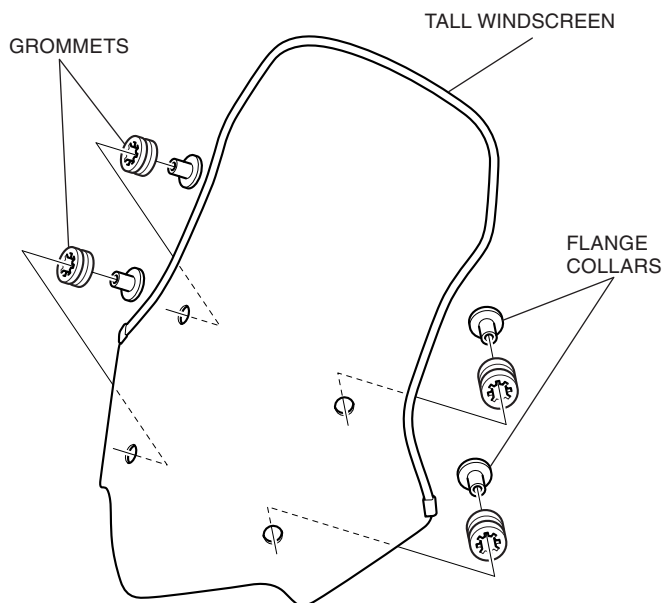
- Check the accessory mounts frequently and retighten if necessary.
- Reduce speed when running in strong wind.
- Replace this accessory with a new one if it is damaged or discolored excessively.
- When this accessory becomes dirty, rinse it thoroughly with cool water to remove loose dirt, then wipe with a clean cloth or sponge. Do not use a brush to clean this accessory as it may scratch the surface.
- Never use petroleum solvents such as gasoline, thinner and benzene to clean this accessory. Also do not use acid or alkaline cleaners to clean this accessory.
- Wipe up spilled brake or battery fluid at once as they may damage the plastic surface.
- If the motorcycle is left covered for an extended period of time, park in the shade. Parking a covered motorcycle in direct sunlight can cause the windscreen to deform due to heat buildup under the cover.
- Handle this accessory with care.
It can be damaged when it is bent excessively or is subject to strong shock or impact.
- Select a firm, level surface when you park the motorcycle. Also bear in mind that strong wind can cause the motorcycle to topple to the ground.

INSTALLATION

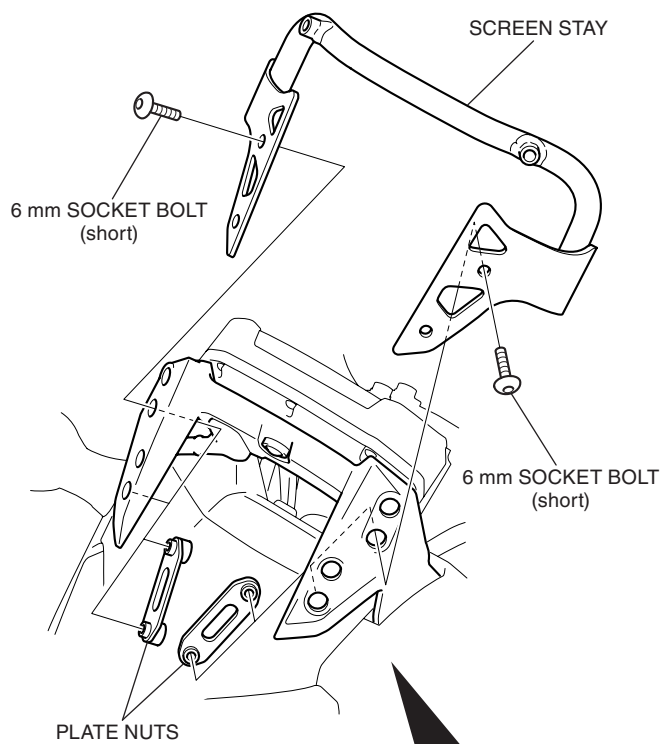
1. Remove the existing windscreen from the motorcycle as shown.



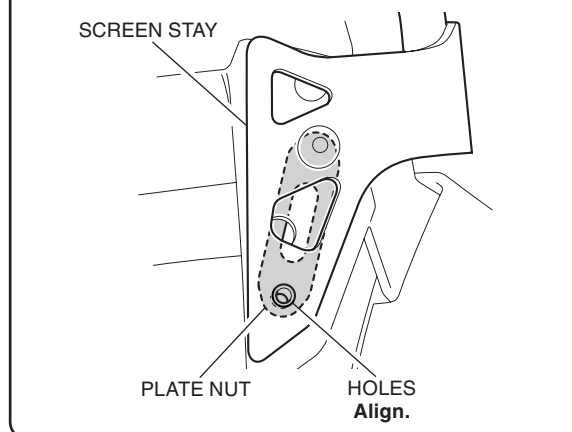
2. Assemble the tall windscreen as shown.



3. Install the screen stay as shown.



Align the holes of the screen stay and plate nut.



4. Install the tall windscreen as shown.

6 mm SOCKET BOLT
(long)

WASHER

