



# INSTALLATION INSTRUCTIONS

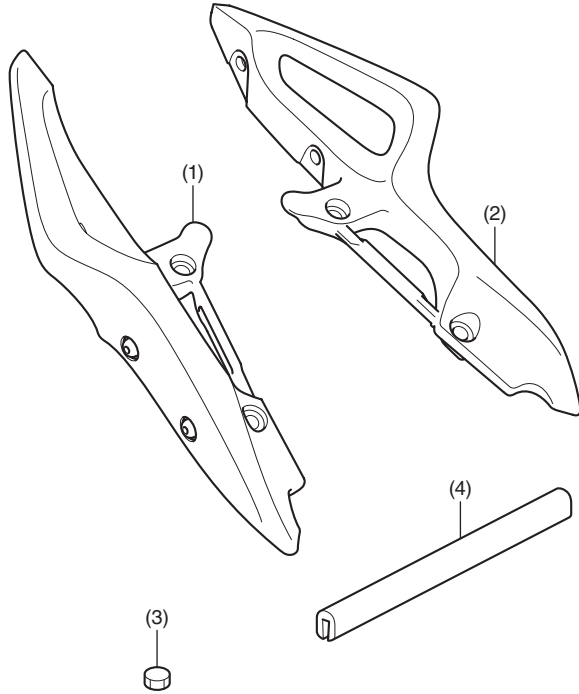
Accessory  
**REAR CARRIER/SADDLEBAG  
 MOUNT BRACKETS**  
 P/N 08L74-MGS-A30

Application  
**NC700X/XD**

Publication No.  
**MII 13973**  
 Issue Date  
**February 2012**

**Honda Dealer: Please give a copy of these instructions to your customer.**

## PARTS LIST



No.	Description	Qty
(1)	Right bracket	1
(2)	Left bracket	1
(3)	Plug	4
(4)	Molding	1

## SUPPLIES REQUIRED

Scissors  
 Ruler  
 Isopropyl alcohol  
 Shop towel

## USE AND CARE INFORMATION

- Check the accessory mounts frequently.
- Added accessories can affect a motorcycle's stability, performance and safe riding speed.

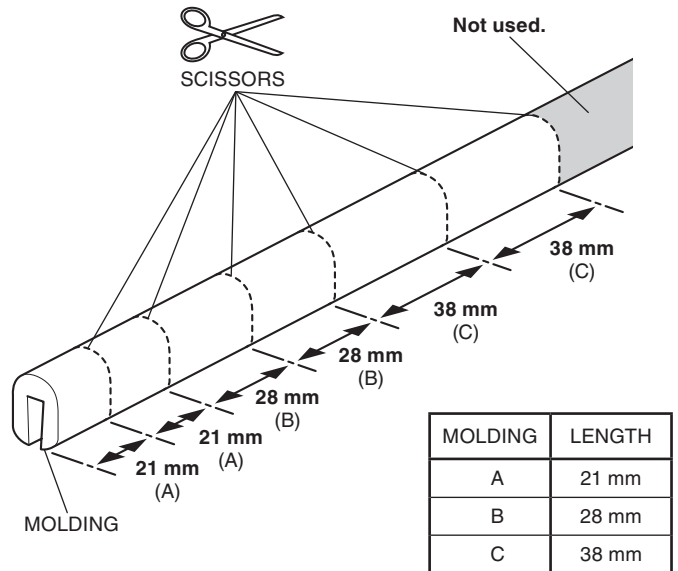
## INSTALLATION INFORMATION

### NOTE:

- Heat the bonding surfaces with a hair dryer if the ambient air temperature is below 70°F (21°C).
- The adhesive reaches full strength in 72 hours. Wait at least 24 hours before riding your motorcycle.

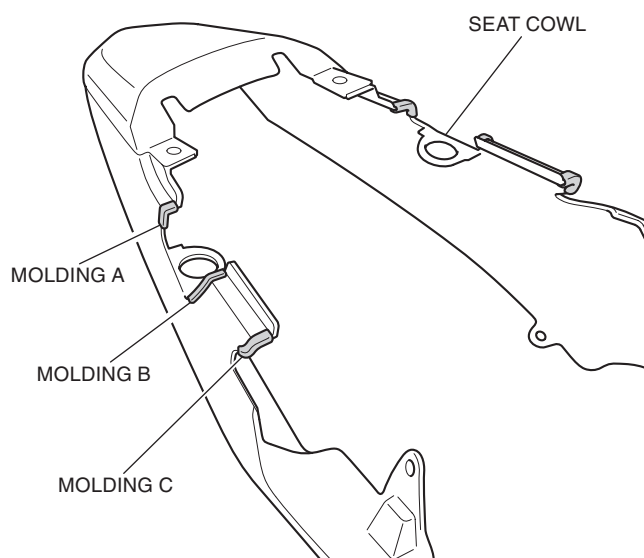
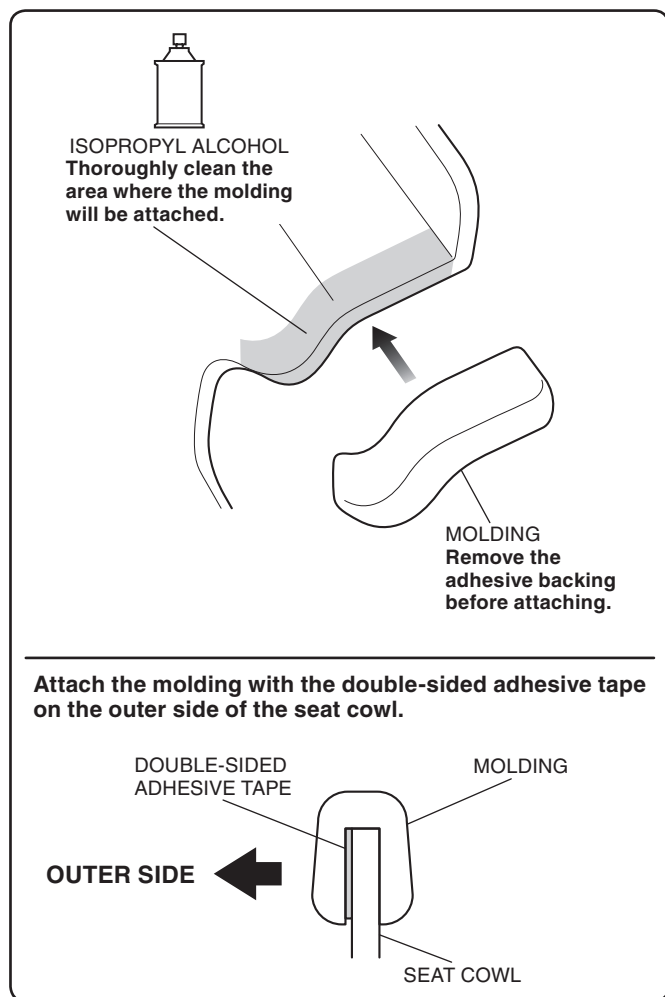
## INSTALLATION

1. Refer to the Installation Instructions of the Saddlebag Support Brackets or Rear Carrier, remove the seat cowl.
2. Cut the molding according to the dimensions shown.



3. Attach the moldings to the cut part on the seat cowl as shown.

- Repeat on the left side.



4. Install the seat cowl in the reverse order of removal.